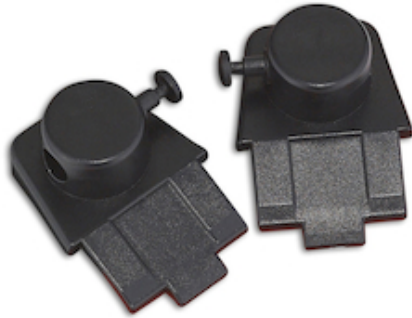




SPECIFICATION SHEET

STYLE: 251-EPHC02



Technical Data

Color	Black
Sizes Available	--
Packaging	--
Packed	--
Case Dimensions (cm)	0.00 x 0.00 x 0.00
Case Weight (kg)	0.00
Country of Origin	Canada
Construction	--
Certifications	TAA Compliant
Product Circularity	--

Dynamic™ Cap Lock Blades

- To attach welding helmets, headgears or brackets to a hard hat
- Fits easily on to most hard hats with slots
- Quick & Easy snap on and off feature

PROTECTIVE INDUSTRIAL PRODUCTS, INC. | BRINGING THE BEST OF THE WORLD TO YOU®

AMERICAS: +1 (800) 262-5755 | EUROPE: +34-96182-41-48 | AMEA: (ASIA, MIDDLE EAST, AFRICA) 852-2475-9228 | www.pipglobalsafety.com

This document and the information contained herein is the property of Protective Industrial Products, Inc. (PIP) and may not be used or reproduced without permission. Product users should conduct all appropriate testing or other evaluations to determine the suitability of PIP products for a particular purpose or use within a particular environment. PIP DISCLAIMS ALL WARRANTIES OTHER THAN AS EXPRESSLY PROVIDED. 2026-02-01